



MINING

Providing manufacturing and maintenance services to operators, product and service companies as well as EPC companies during all phases of the project lifecycle.

Future Engineering manufactures on behalf of leading product and service companies for their designs.

Future Engineering manufactures to ISO 9001 Australian standard. We have 26 years of mining experience in Western Australia.

Our support services include; the manufacturing of parts for lifting equipment, break-out tooling, blast hole equipment, solar lighting, accessories, bit lifters, box lifters, tooling storage racks

YOUR FUTURE OUR CAPABILITIES

» Break Out & Lifting Equipment

Future Engineering offers a full range of capabilities in order to meet your requirements for land mining exploration.

- Break Out Pots
- Deck Bush Lifters
- Exhaust Tube Extractors
- Bit Box Lifters
- Lifting Bells
- Jaw Clamps

» Mining Gear Box Components

- Couplings
- Hub Components
- Keyways For Hubs
- Gearboxes Components And Drives
- Shafts

» Mining Accessories

- Glands
- Boom Nuts
- Solar Lighting
- Tooling Storage Racks
- Spacers
- Adaptors
- Pump Accessories
- Gauges & Calipers
- Sheave Wheels
- Flanges
- Nipples
- Connectors



YOUR FUTURE OUR CONCERN

» Quality Assured

Future Engineering has consistently exceeded client expectations in quality and service since 1991. Our company is totally committed to understanding and meeting the quality needs and expectations of all our customers.

Future Engineering has a proud reputation for delivering quality components. We have established a comprehensive quality assurance system that allows our company to meet all of the requirements of the ISO 9001: 2008 quality management standards.

» Our Responsibility

"Safety is success by purpose" and is a strong culture driven into the minds of all our staff here at Future Engineering.

» On Time, every time!

Future Engineering has a very good reputation for on-time delivery. Our experienced production managers can ensure a quick turn around from quotation to final delivery of your product.

Our delivery performance ensures the fulfillment of our customers' demand to the wish date. Our customers can monitor the progress of their project through a real-time customer portal.

» Market Approach

Future Engineering is a family owned business and ensures that our staff and customers come first every time.

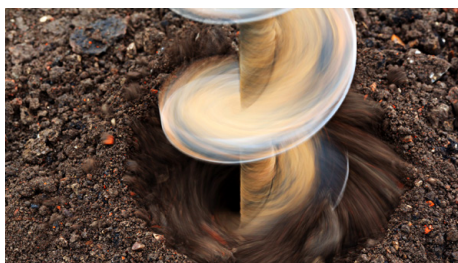


» Additional Services

- Load testing to Australian standards
- Heat treatment with certification (if required)
- Quality packages to suit individual customer requirements.
- MDR & material certificates
- NDT welding with certification (if required)
- Surface treatments

Drilling Solutions

- Deck Bush Lifters
- Toolboxes
- Lifting Bells
- Plastic Gauges
- Heavy Duty Jaw Clamps
- Strainers
- Bit Lifters
- Rotary Bit Box Lifter
- Falk Australia
- Bore And Key Coupling
- Hubs
- Jack Shafts
- Cover Shafts



Power Transmissions Solutions

- Bore And Key Coupling
- Hubs
- Jack Shafts
- Cover Shafts
- Cage Seals
- Nylon Bushes
- Thrust Washers



Wellhead Maintenance & Pump Solutions

- Grease Pump Model 3 Short Shaft
- O-ring Hubs
- Modifications To Inner And Outer Tubes
- Ball Seats
- Ball Stops
- Bottom Seal Block Pushes
- Piston Copper Washers
- Rod Bushes
- Solid Barrel Cylinders
- Mild Steel Connectors For Grease Pumps
- Modifications To Adapters



Mining Accessories

- Aluminium Carby Case
- Base Plate With Gussetts
- Led Light Brackets
- Light Bases With Pivot Arm
- Redress Kit For Hammer Rack
- Solar Tower Mast Support Brackets.